

1200 MIXER

Operator's Manual & Parts Breakdown



1160 Olympic Drive
Corona, CA 92881

WESTERN

Phone: (951) 284-2000
Fax: (951) 284-2050

TABLE OF CONTENTS

1200 PLASTER MIXER SAFETY INSTRUCTIONS	3
TOWING SAFETY.....	4
OPERATING INSTRUCTIONS	5
CLUTCH	5
MIXING	5
CLEAN UP	5
SEALS AND BEARINGS	5
SEAL REPLACEMENT	6
GEARBOX	7
CLUTCH	7
CLUTCH ADJUSTMENT	7
SHEAR BOLT	7
WHEEL BEARING	7
ENGINE	7
PARTS BREAKDOWN	8
LIMITED WARRANTY	12

1200 PLASTER MIXER SAFETY INSTRUCTIONS

The following safety instructions are for the benefit of the contractor and the equipment operators. These instructions should be followed at all times and the contractor should make sure the operators are fully trained and have read these safety instructions.

1. Do not operate or service this equipment before reading the operating and maintenance instruction manual or serious injury may result.
2. Stop the engine if leaving the machine unattended.
3. If the machine jams, disengage the clutch immediately. Turn engine off before attempting to dislodge the jammed object.
4. Keep the equipment properly maintained. Poorly maintained equipment can be unsafe.
5. Stop engine and allow engine to cool down before attempting to service the engine or add fuel.
6. Keep hands and objects out of the mixing barrel when the engine is running whether or not it is in gear.
7. Do not operate this equipment unless all guards and safety grates are attached and in place.
8. Never attempt any repairs while the engine is running.
9. Chock wheels if parked on a slope.

TOWING SAFETY

Check with state and local laws that apply to the roads you will be towing on before towing this mixer and always check the following:

1. Verify the hitch is securely attached to the towing vehicle.
2. Safety chain is securely hooked.
3. Drum is empty, in an upright position with the dump latch secured.
4. Lug nuts and axle nuts are tight.
5. Tires are in good condition and properly inflated to 32 P. S. I.
6. Always thoroughly clean the machine prior to towing. Loose material could shake loose and damage other vehicles or harm pedestrians.

OPERATING INSTRUCTIONS

The model 1200 Mixer is heavy-duty and capable of mixing materials to an ideal consistency in only minutes. It is suitable for all plaster, mortar, cementitious slurries, reproofing materials, acoustic, roong coatings, gypsum mixes with sand, clay, vermiculite, perlite, magnesite, low and high viscosity liquids.

CLUTCH

Always verify the clutch is disengaged before starting the engine. Allow the engine to warm up before engaging the clutch.

MIXING

Add all except 1-1/2 gallons of water. Engage the clutch to start rotating the paddles. Add all of the cement and let it mix into a soft, lump free, slurry. Gradually add the aggregate at about 1 cubic foot every 15 seconds. Add the remaining water desired to get the consistency desired.

CLEAN UP

Keep the mixer as clean as possible as a clean and well maintained machine will give maximum years of service.

SEALS AND BEARINGS

Lubricate the bearings and shaft seals daily. Fill with waterproof grease until the grease starts to squeeze to the seals and retaining rings. This is often audible as pockets of air pop through the seals and retaining rings. Do not try to force grease through the seals as doing so can cause the seals to fail. Improper maintenance will shorten the life of the seals, bearings, and paddle shaft.

SEAL REPLACEMENT

It is recommended to replace the bearings anytime these seals are replaced, as they are relatively inexpensive versus the cost of downtime and labor. The paddle shaft should be thoroughly inspected for grooves. Paddle shafts with a groove 1/8" or deeper should be replaced.

Disconnect the gearbox from the shaft coupler and remove the engine and gearbox from the engine compartment. Remove the bolts holding the drum's pillow block bearings to the frame and remove the drum from the frame. Remove the paddles from the paddle shaft if the shaft is to be replaced. Remove the pillow block bearings from the shaft. Removing the ange mount bearing exposes the seal and grease ring assemblies. For seal installation, put a small amount of grease on the rubber seals so they will slip on the shaft. The seals are purposely undersized to allow wear. Assemble as indicated on the illustration. Completely ll the seal cavity with waterproof grease.

DESCRIPTION	PART #
Ref	
1	GREASE FITTING 1200-350-040
2	PADDLE SHAFT 1200-100-100
3	PADDLE SHAFT SEAL 1200-100-060
3A	PADDLE SEAL SPACER 1200-100-080
4	GREASE RING 1200-100-070
5	FLANGE BEARING GOLD 1200-100-050
5A	FLANGE BEARING STD 1200-100-051
6	GREASE FITTING 1200-200-230
7	NUT LOCK 1200-030-150
8	HEX BOLT 1200-100-020

GEARBOX

The gearbox has two compartments separate from each other. The compartment closest to the engine is for the clutch assembly, and the compartment closest to the paddle shaft is for the speed reducing gears.

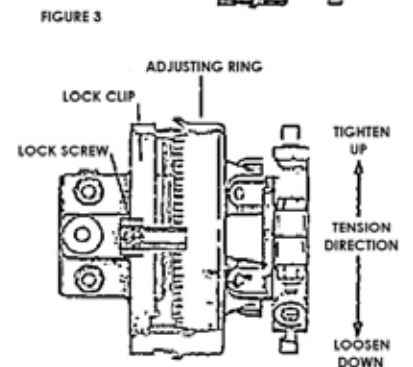
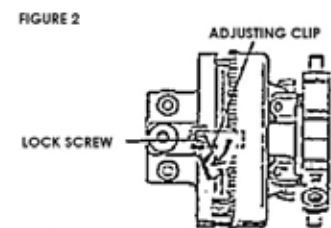
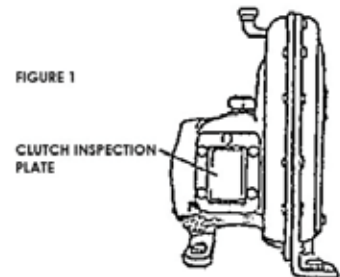
The clutch compartment uses a 30W engine oil every other month and change at least once per year. The gear reduction compartment uses a 90W gear lubricant. Check the level every other month and rell as necessary.

CLUTCH

The clutch is set from the factory to allow for some initial wear. Refer to the illustration and the following instructions to maintain the clutch for proper operation:

CLUTCH ADJUSTMENT

1. Disable engine from being able to start.
2. Disengage clutch.
3. Remove inspection plate on the gearbox.
4. Bump engine over until adjusting clip can be accessed.
5. Loosen the lock screw and move the clip away form the notches on the adjusting ring.
6. Rotate adjusting ring one notch at a time until desired engaging pressure is achieved. Proper pressure is indicated when it requires a smooth and rm force that will cause it to click into place. It should not be set too tight as some of the clutch parts can break. If you have to lean into it using your body weight to engage the clutch, it is too tight. To tighten the clutch, rotate the adjusting ring counter- clockwise or downward.
7. Replace the adjusting clip and lock down by tightening the screw.
8. Replace the inspection plate and seal with silicon or a new gasket.
9. Rell clutch housing with oil.



SHEAR BOLT

The 1200 mixer has a shear pin at the output of the gearbox were it connects to the paddle shaft.

If a serious jam occurs, the shear pin may break. It is a good idea to keep an extra shear pin on hand.

WHEEL BEARING

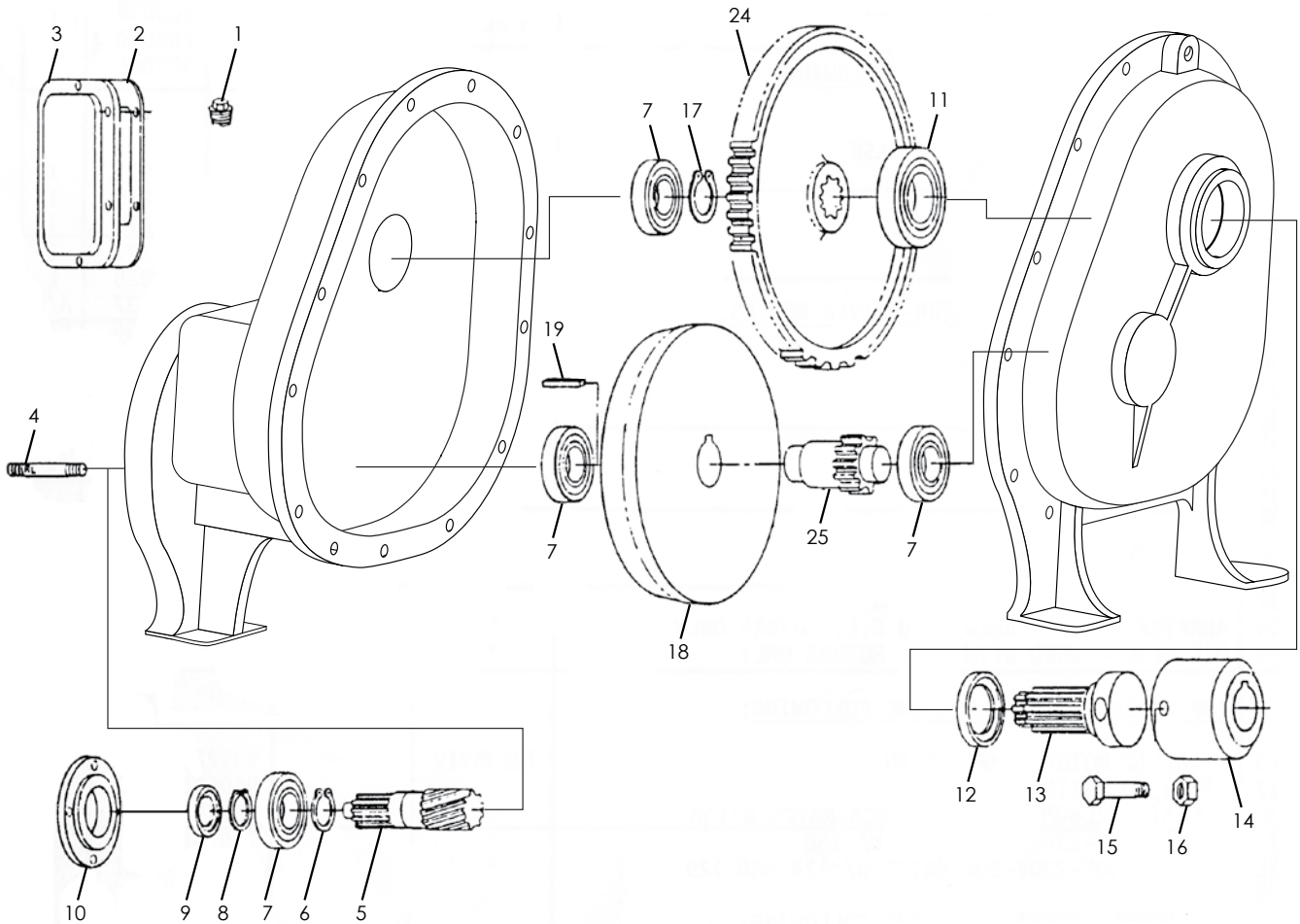
Wheel bearings should be given the same care as if they were on a boat trailer or on a car receiver.

Repack the adjust wheel bearing every six months.

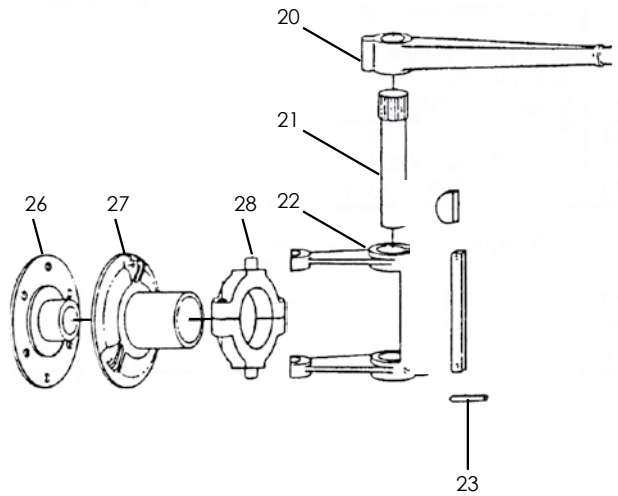
ENGINE

Check oil daily and add oil as prescribed in the engine owner's manual.

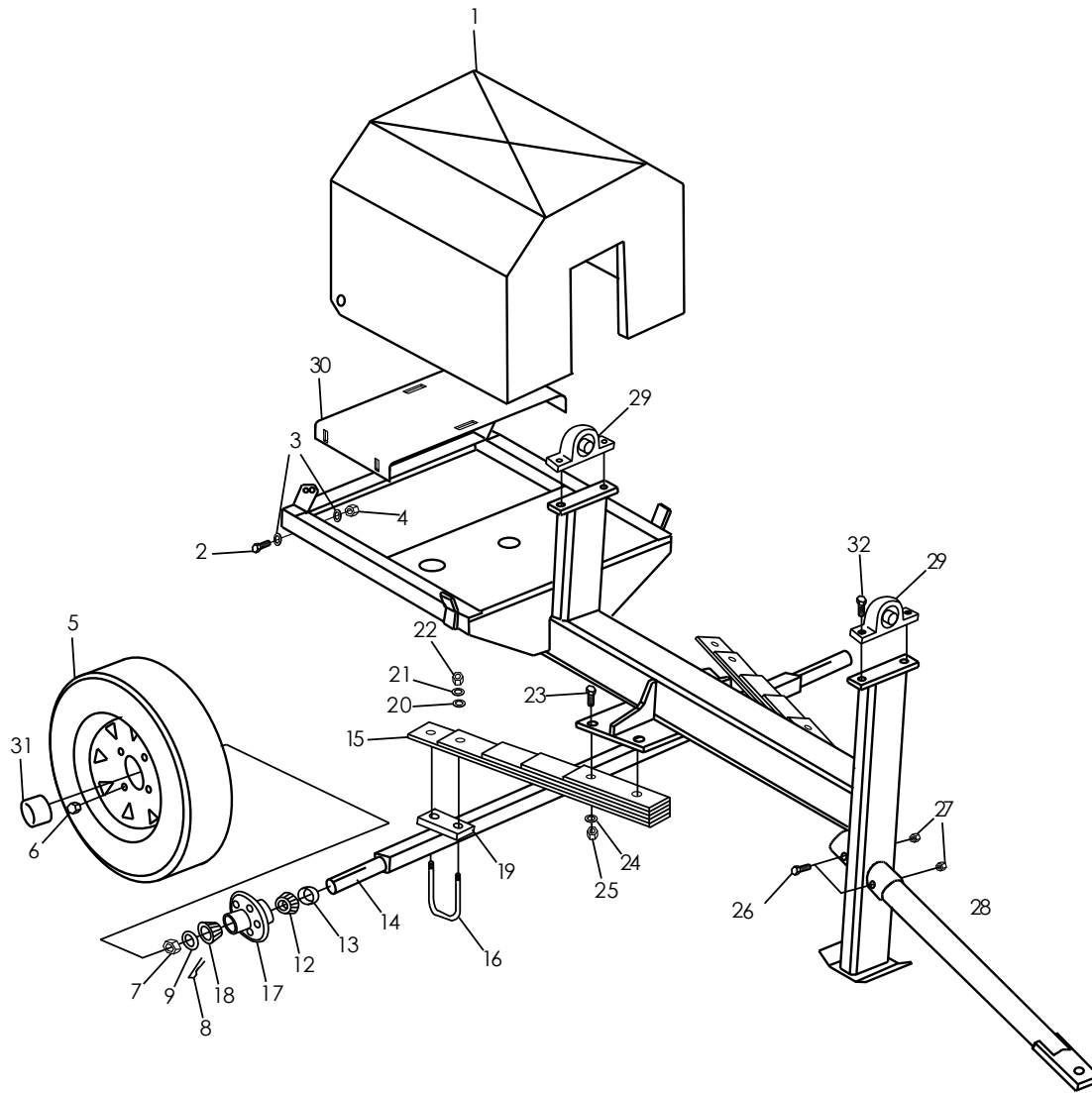
PARTS BREAKDOWN



Ref	Description	Part Number
1	1/2 x PLUG	1200-200-130
2	INSPECTION GASKET	1200-200-240
3	INSPECTION PLATE	1200-200-230
4	7/16 STUD	501-0PC-321
5	INPUT SHAFT	1200-200-210
6	INPUT RING	1200-200-211
7	BEARING	00336206ZNR
8	INPUT RING	1200-200-211
9	INPUT SEAL	1200-200-200
10	HOUSING	1200-200-190
11	BEARING	00336208ZZC
12	SEAL OUTPUT	1200-200-080
13	OUTPUT SHAFT	1200-200-090
14	SHAFT COUPLER	1200-150-130
15	SHAFT PIN	1200-150-110
16	NUT LOCK 3/8	1020-00-0006
17	OUTPUT RING	1200-200-060
18	GEAR INTERNAL	1200-200-120
19	KEY WAY	1200-200-110
20	SHIFTER HANDLE	1200-150-100
21	SHIFT SHAFT	1200-200-020
22	CLUTCH FORK	1200-150-060
23	PIN GROVED	1200-150-020
24	MAIN GEAR	1200-200-050
25	GEAR INTERMEDIATE	1200-200-100
26	DRIVE MEMBER ASSY.	5010LC100535
27	PRESSURE PLATE ASSY.	5010LC100543
28	RELEASE BEARING	5010LC100519

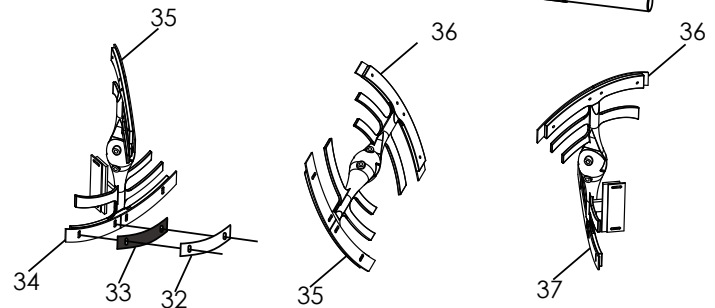
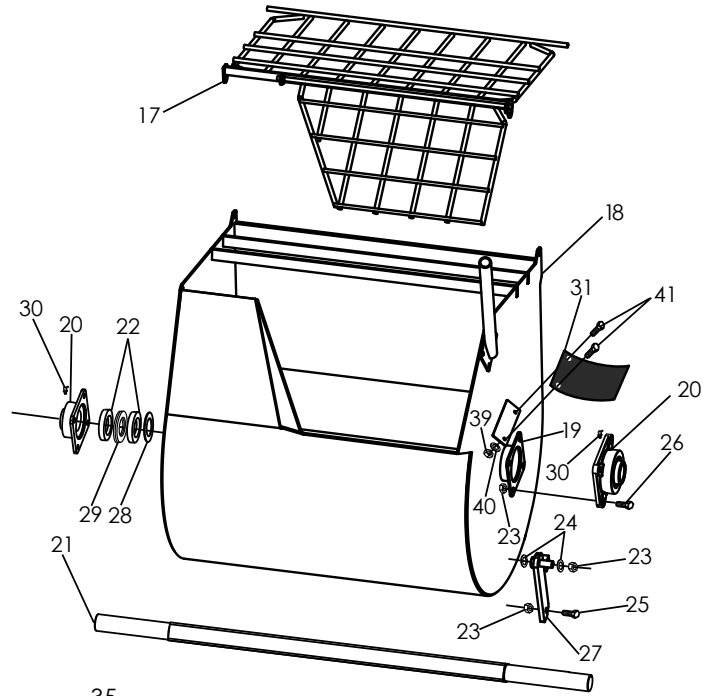
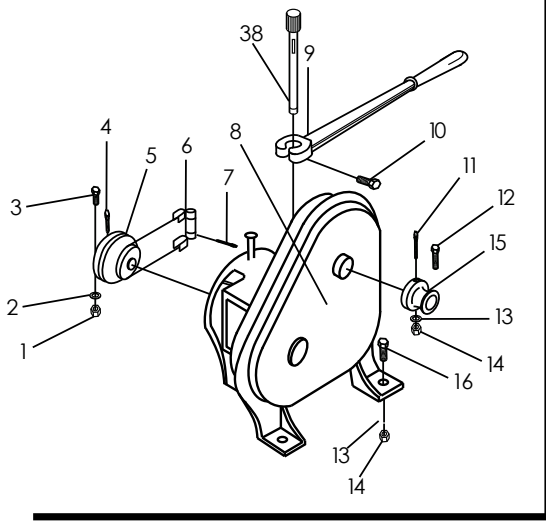


PARTS BREAKDOWN



Ref	Description	Part Number	Ref	Description	Part Number
1	HOOD SPITFIRE	1200-050-020	19	AXLE SPRING MOUNT	1200-050-250
1	FALCON HOOD	1200-050-021	20	WASHER LOCK	1030-000-003
2	HEX BOLT	1010-000-039	21	WASHER FLAT	1030-000-003
3	WASHER FLAT	1030-000-012	22	NUT LOCK FINE	1200-030-280
4	NUT LOCK	1020-000-004	23	HEX BOLT	1010-000-058
5	TIRE/ WHEEL ASSY	1200-050-070	24	WASHER FLAT	1030-000-015
6	NUT LUG	1020-000-029	25	NUT LOCK	1020-000-026
7	NUT SPINDLE SLOTTED	1200-030-200	26	HEX BOLT	1010-000-016
8	COTTER PIN	1200-010-190	27	NUT LOCK	1020-000-001
9	WASHER THRUST	1200-050-120	28	TOW BAR 1" PIN	1200-030-010
12	BEARING WHEEL INNER	1200-030-180	28	TOW BAR 2" BALL	1200-030-011
13	SEAL GREASE	1200-050-160	29	BEARING PB GOLD	1200-100-110
14	AXLE	1200-050-230	29	BEARING PB STD	1200-100-111
14	AXLE ASSY ITEM 12-20	1200-050-231	30	ENGINE MOUNT	1200-050-100
15	LEAF SPRING	1200-050-260	31	DUST CAP	003-000-26
16	UBOLT	1200-050-240	32	HEX BOLT	1010-000-014
17	WHEEL HUB	1200-050-140			
18	BEARING WHEEL OUTER	1200-030-180			

PARTS BREAKDOWN

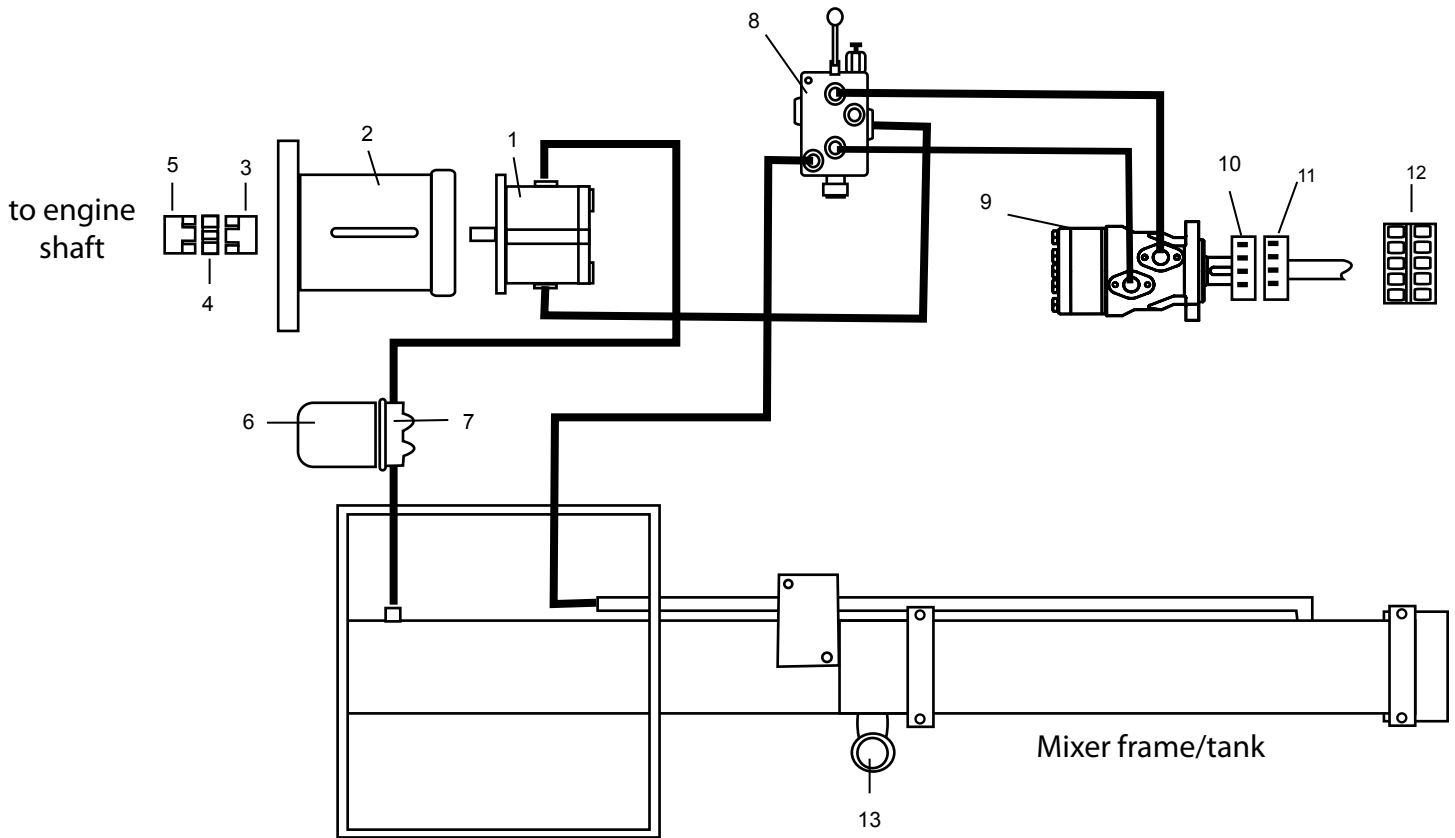


Ref		
1	NUT	1020-000-004
2	WASHER LOCK	1030-000-020
3	HEX BOLT	1010-000-039
4	SET SCREW	1010-000-045
5	CLUTCH	1200-150-050
6	CLUTCH FORK	1200-150-060
7	ROLL PIN	1200-150-020
8	GEARBOX	1200-150-090
9	SHIFTER HANDLE	1200-150-100
10	HEX BOLT	1200-150-150
11	SHEAR PIN	1200-150-110
12	HEX BOLT	1010-000-093
13	FLAT WASHER	1030-000-015
14	NUT LOCK	1020-000-006
15	SHAFT COUPLER	1200-150-130
16	HEX BOLT	1010-000-053
17	SAFETY GRATE 2/3 SPOUT	1200-050-013
17A	SAFETY GRATE GUN SPOUT	1200-050-014
17B	MATERIAL SCREEN GUN	1200-050-015
18	MIXING DRUM 2/3 SPOUT	1200-050-060
18A	MIXING DRUM GUN SPOUT	1200-050-061
19	SEAL HOUSING WELD-ON	1200-100-065
20	FLANGE BEARING GOLD	1200-100-050
20	FLANGE BEARING STD	1200-100-051
21	PADDLE SHAFT	1200-100-100

Ref		
22	PADDLE SHAFT SEAL	1200-100-060
22A	SEAL PADDLE SHAFT	1200-100-080
23	NUT LOCK	1020-000-001
24	FLAT WASHER	1030-000-007
25	CLEVIS PIN	002-000-04
26	HEX BOLT	1010-000-010
27	BUCKET STOP	1200-050-360
28	PADDLE SEAL SPACER	1200-100-080
29	GREASE RING	1200-100-070
30	GREASE FITTING	359-800-003
31	RUBBER BEARING COVER	1200-050-410
32	BLADE KIT STEEL W/ H.W.	1200-100-230
33	RUBBER BLADE KIT	1200-100-231
34	PADDLE W/WIPER ENG	1200-100-134
35	PADDLE LT CAST DESIGN	1200-100-131
36	PADDLE RT CAST DESIGN	1200-100-132
37	PADDLE W/WIPER TOW	1200-100-133
34A	PADDLE W/SCRAPER ENG	1200-100-150
35A	PADDLE FAB LT	1200-100-170
36A	PADDLE FAB RT	1200-100-180
37A	PADDLE W/SCRAPER TOW	1200-100-200
38	SHIFT SHAFT 110D	1200-200-020
39	NUT	1010-000-003
40	FLAT WASHER	1030-000-008
41	HEX BOLT	1020-000-002

PARTS BREAKDOWN

HYDRAULIC (OPTIONAL) 1200 MIXER DIAGRAM



REF	DESCRIPTION	PART #
1	GEAR PUMP	5301SNP208DCI06
2	PUMP/MOTOR MOUNT	5301E575502A
3	COUPLING	5301L095-37242
4	COUPLING SPIDER	5301L095-11070
5	COUPLING	5301L095-11091
6	FILTER ELEMENT	5301P562198
7	FILTER HOUSING	5301P563278
8	HYD VALVE PM	53011025OL34HS
9	HYD MOTOR	5301151H1046
10	CHAIN COUPLING	0040501811/4
11	CHAIN COUPLING	0040501815/8
12	CHAIN FOR COUPLER	00405018
13	TANK CAP	5301703-1314

PARTS BREAKDOWN

LIMITED WARRANTY

All warranty claims must accompany a proof of purchase and must be authorized by Western Equipment Manufacturing, Inc. before started. To obtain approval from Western Equipment Manufacturing, Inc. call (951) 284 -2000 or write to 1160 Olympic Drive, Corona, CA 92881. Western Equipment Manufacturing, Inc. warrants the product against defects in material and workmanship under normal use and service for 180 days from the date of purchase provided the product has not been subject to misuse, abuse negligence, or accident. Warranty for engines motors, compressors, transmissions, accessories, and related items are covered under the manufacturer’s warranty policy & procedures. Western Equipment Manufacturing, Inc. accepts no responsibility where a manufacturer’s warranty applies as in the case of engine motors, compressors, transmissions, accessories and related items. Western Equipment Manufacturing, Inc. will replace defective parts with its own manufactured or suitable replacement part at the discretion of Western Equipment Manufacturing, Inc. Warranty excludes those parts that are subject to normal operational wear, tear, and breakage. Warranty does not obligate Western Equipment Manufacturing, Inc. to bear the cost of labor or freight for replacement of defective parts. Western Equipment Manufacturing, Inc. reserves the right to direct that the warranty service be performed at a facility authorized by Western Equipment Manufacturing, Inc. Western Equipment Manufacturing, Inc. assumes no liability for damages incurred such as down time, lost time, loss of materials, employee expenses, loss of profits, deadline penalties, or any other related damages. Western Equipment Manufacturing, Inc. reserves the right to use replacement parts consistent with current specifications.

Please mail or phone in the following information about your equipment as soon as possible. Should you need to file for a warranty claim, the following information will help us expedite the claim process.

	Main Equipment	Engine	Compressor	Gearbox	Accessory
Model Number:					
Serial Number:					
Date of Manufacture:					
Customer:					
Mailing Address:					
City:		State:			
Phone:		Fax:			
Purchased at:				Date of Purchase:	
City:		State:			